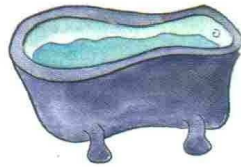


Rebusy

Rozwiąż rebusy i odczytaj kilka wezwań z Litanii Loretańskiej



W=P A=O

M=Ł

~~TRA~~

a)



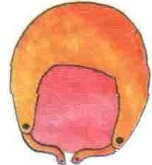
A=O



~~O~~



~~P~~



~~SK~~

b)

UZ +



~~GA~~



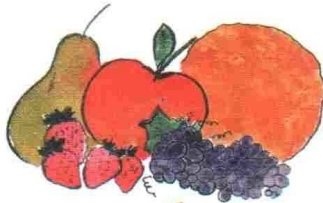
~~E~~



+ YCH

Ó=O

c)



~~CE~~



~~S~~

O=Ó

~~A~~

d)
